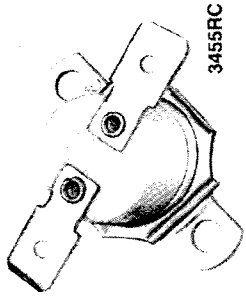


1700



# UNIVERSAL THERMOSTATS 3455RC 15 AMP HIGH TEMPERATURE SERIES



3455RC

**APPLICATIONS:**

- Copy Machines
- Power Supplies
- Telecommunications
- Ovens

**BENEFITS:**

- Electrical Rating to 15 Amp 120 VAC Resistive
- Environmental Exposure 0° to 550°F (-18° to 288 °C)
- U.L., C.S.A., European Approval Agency Listings
- Single Contact (SPST)
- Pre-set and Tamperproof
- High Density Ceramic Base

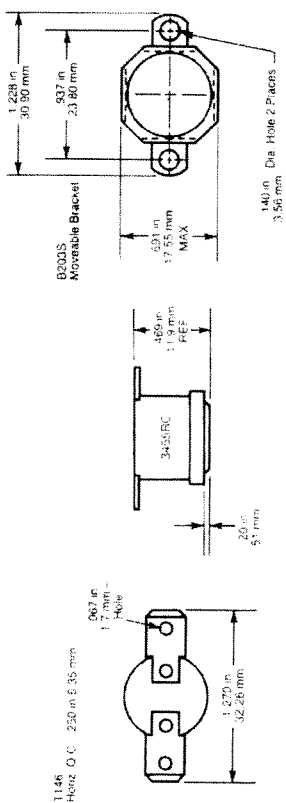
**SHIPPED FROM STOCK**

**OPEN ON RISE**

TEMP °F			TEMP °C			PART NUMBER
OPEN	TOL +/-	CLOSE	OPEN	TOL +/-	CLOSE	
65	5	30	18	3	-1	3455RC-100-220
75	5	40	24	3	4	3455RC-100-221
85	5	55	29	3	13	3455RC-100-222
95	5	65	35	3	18	3455RC-100-223
105	5	75	41	3	24	3455RC-100-224
115	5	85	46	3	29	3455RC-100-225
125	5	95	52	3	35	3455RC-100-226
135	5	105	57	3	41	3455RC-100-227
145	5	115	63	3	46	3455RC-100-228
155	5	125	68	3	52	3455RC-100-229
165	5	135	73	3	57	3455RC-100-230
175	5	145	79	3	63	3455RC-100-231
185	5	155	85	3	68	3455RC-100-232
195	5	165	91	3	73	3455RC-100-233
205	6	175	96	4	79	3455RC-100-234
215	6	185	102	4	85	3455RC-100-235
225	6	195	107	4	91	3455RC-100-236
235	6	205	113	4	96	3455RC-100-237
245	6	215	118	4	102	3455RC-100-238
255	7	225	124	4	107	3455RC-100-239
275	7	245	135	4	118	3455RC-100-240
295	7	265	146	4	129	3455RC-100-241
315	10	275	157	6	135	3455RC-100-242

**CLOSE ON RISE**

TEMP °F			TEMP °C			PART NUMBER
CLOSE	TOL +/-	OPEN	CLOSE	TOL +/-	OPEN	
70	8	35	21	5	2	3455RC-100-243
90	8	60	32	5	16	3455RC-100-244
110	8	80	43	5	27	3455RC-100-245
130	8	100	54	5	38	3455RC-100-246
150	8	120	66	5	49	3455RC-100-247
170	8	140	77	5	60	3455RC-100-248
190	8	160	88	5	71	3455RC-100-249
210	8	180	99	5	82	3455RC-100-250
230	8	200	110	5	93	3455RC-100-251



**RATINGS - RESISTIVE**

CATALOG ELECTRICAL TYPE	120 VAC	240 VAC	277 VAC
3455RC	100,000 100,000 6,000 6,000	10 AMP 2.2 FLA 5.8 FLA 125 VA	10 AMP 13.2 LRA 17.4 LRA 125 VA

FLA: Full Load Amps  
LRA: Locked Rotor Amps